

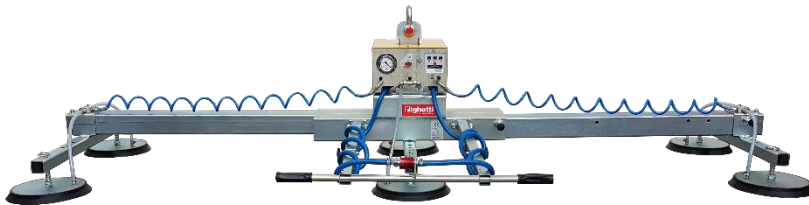
## Vacuum lifter



Model

FTS6A 1000

 Kg max  
1000

**AIR** Power supply  
Compressed Air


The Vacuum Lifter for sheet metal FTS6A 1000 is a model with compressed air operating system and requires connection to the pneumatic system.

The peculiarity of FTS6A 1000 is its telescopic frame combined with a lowered height. The advantage of the telescopic vacuum lifter is to be able to lift, with a single tool, different formats of sheet metal as the structure can be **easily and quickly adapted from the largest to the smallest sheets**. The telescopic Vacuum Lifter is particularly suitable for serving laser cutting stations that need a professional and durable tool.

In addition to having a telescopic structure with width adjustment, the FTS6 metal sheet lifter also has a comfortable **telescopic handlebar** to control the lifter and maintain the correct safety distance from the load.

Thanks to its **lowered structure** it is possible to use the Vacuum Lifter to lift the sheets even in contexts where it is necessary to reduce the height below the hook, due to not particularly high ceilings or various impediments in height.



Horizontal lifting



6 suction pads d.310 mm



Safety devices



Capacity 1000Kg



Telescopic structure

Available also with  
capacity 1800kg

For standard sizes:

3 x 1,5 m ✓

4 x 2 m ✓

6 x 2,5 m ✗

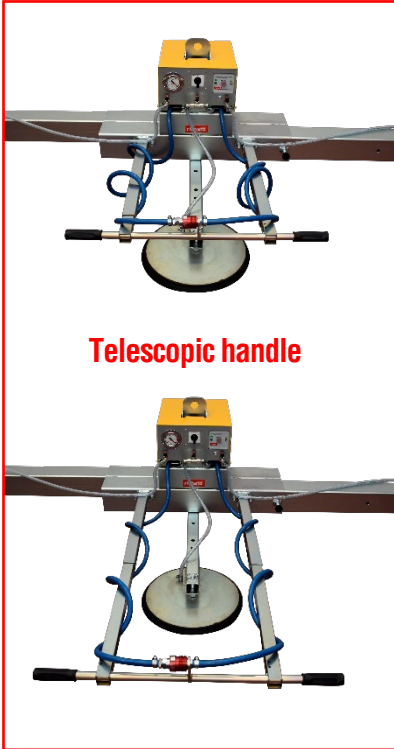
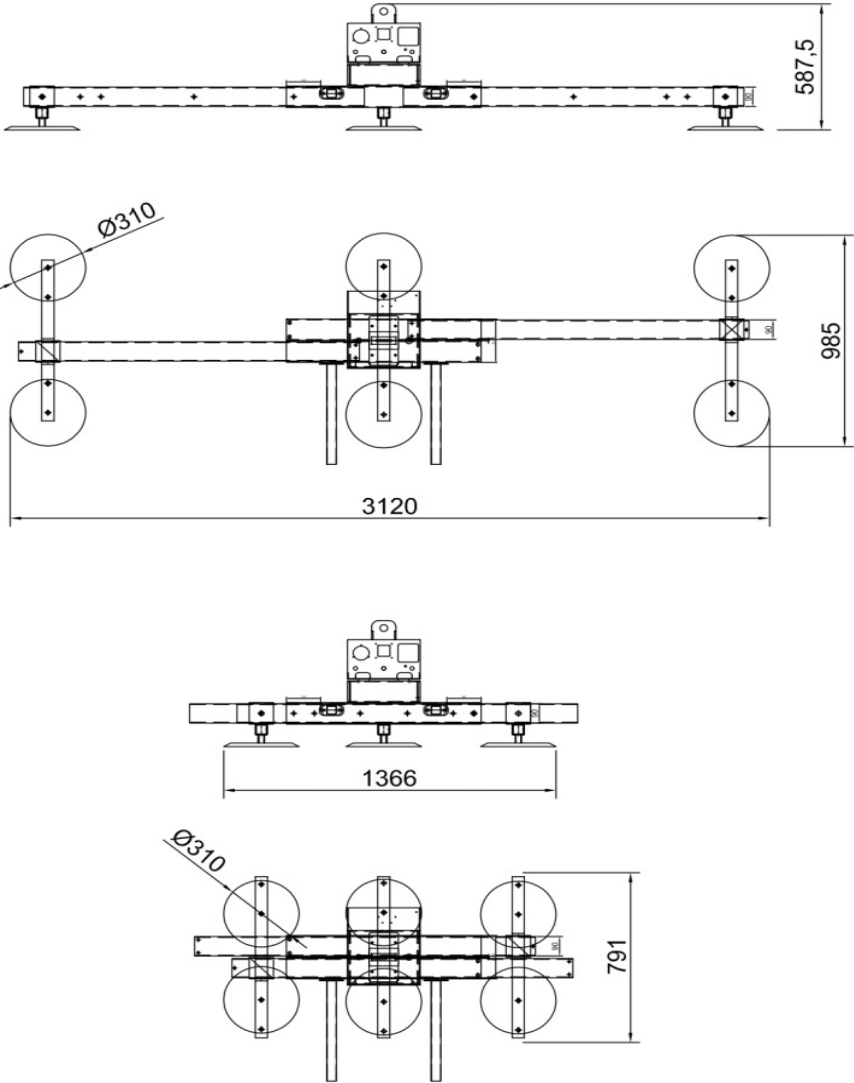


### Technical specification

<b>Application</b>	Metal sheet, stainless steel, aluminium, plastic panels
<b>Lifting capacity</b>	1000 kg
<b>Suction pads</b>	Nr. 6 suction pads in vulcanized rubber, diameter 310 mm Suction pads with spring supports Exclusion of suction pads by cross arm
<b>Frame</b>	Telescopic steel frame structure fixed in horizontal position Adjustable position of suction pads and arms
<b>Operating system</b>	Compressed air
<b>Vacuum system</b>	Vacuum circuit with vacuum reservoir, non-return valve, vacuum filter
<b>Safety systems</b>	Vacuum gauge with colored scale Audio visual low vacuum warning powered independently and with back up battery
<b>Weight of lifter</b>	120kg
<b>Command</b>	Suction and release by slide valve command with safety system

**Vacuum lifter**

Technical drawing



**Series FTS6A 1000**

 **Kg max 1000**

Suction pads		Capacity	Arms		X (mm)		Y (mm)		Product code
nr.	$\varnothing$	kg	nr.	mm	min	max	min	max	
6	310	1000	3	750	1366	3120	706	985	FTS6A1000