

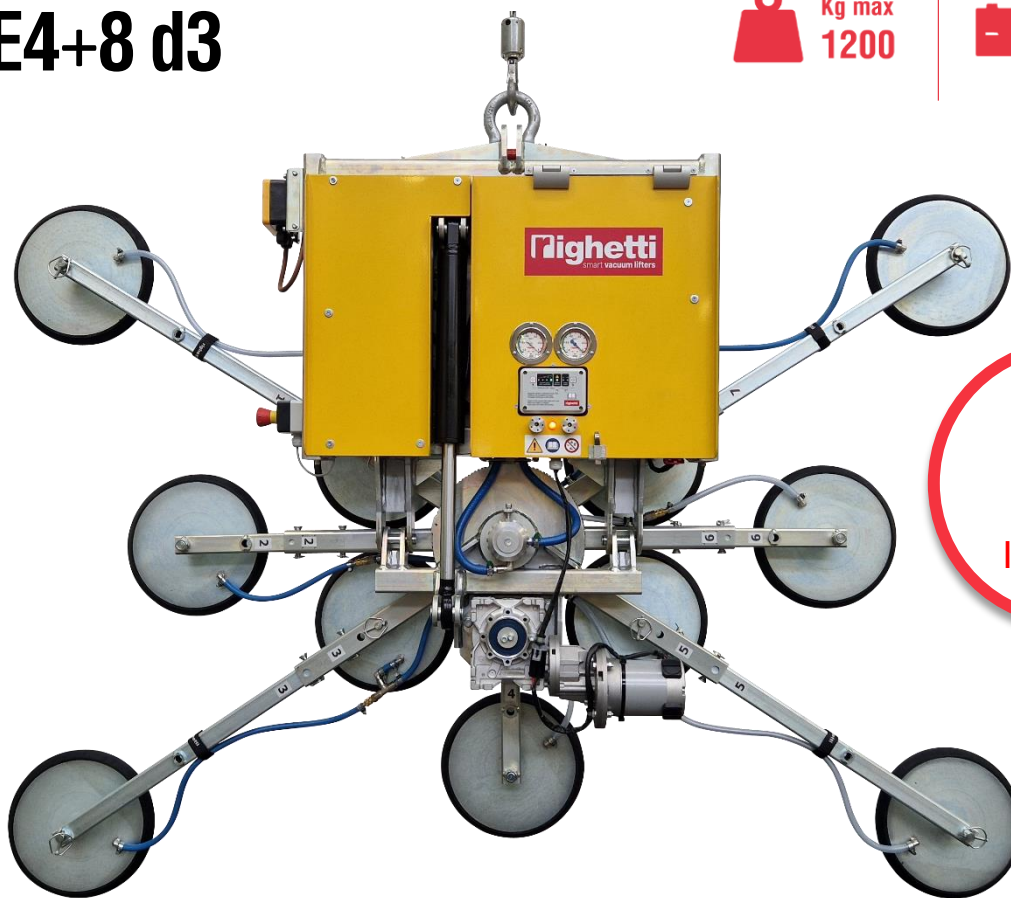
Vacuum glass lifter

Model

GLE4+8 d3

 Kg max
1200

 Power supply
Batteries



Vacuum glass lifter series GLE4+8 has a battery operating system with rechargeable batteries that, if necessary, may be easily removed and quickly replaced.

Vacuum lifter GLE has **compact and slim frame**, only 310 mm width. The lifter offers **hydraulic tilting system and electric 360° continuous rotation**. Professional, quality components and strong lifter's frame guarantee safety and reliable lifting and handling also of the big glass elements. GLE4+8 has 12 suction pads, 4 on lifter's body and 8 on removable extensions. The **extensions allow to modify the lifter's configuration** and lifting capacity adapting the lifter for different glass dimensions. The pad arms may be removed quickly and easily.

Suction, release, rotation and tilting movements are controlled at distance by **wireless radio remote control**. As optional, an additional siren alarm is available.



Powered tilt 0-90°



Powered rotation 360°



Modular frame



Dual vacuum circuit
in compliance with EN13155



Safety devices

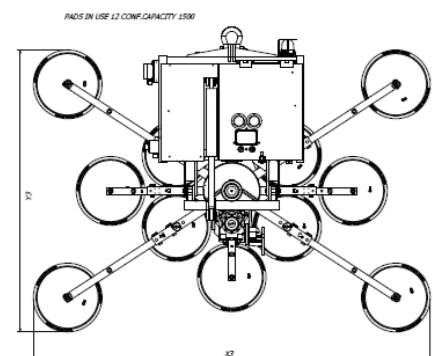
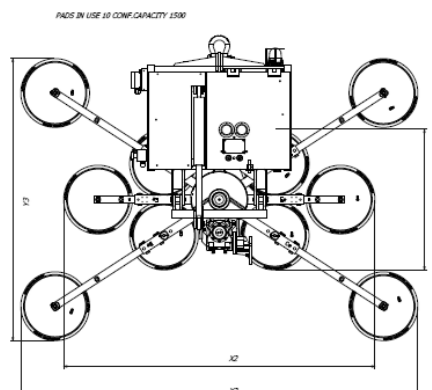
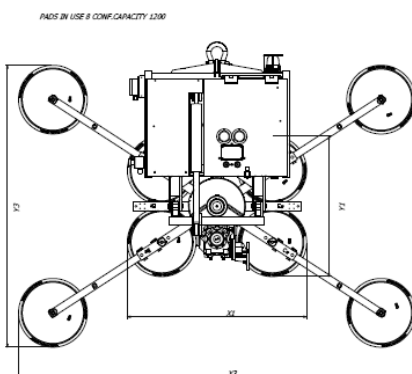
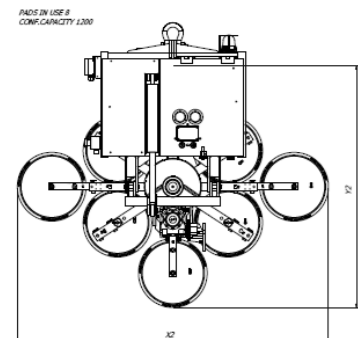
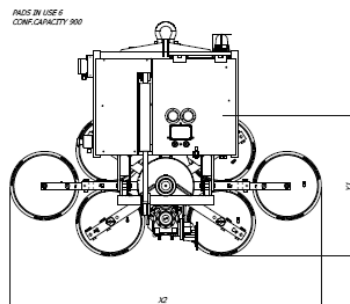
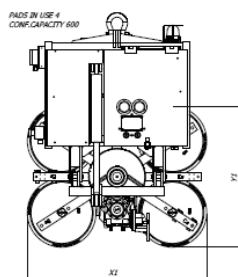


Vacuum glass lifter

Technical specification

| | |
|--------------------------|---|
| Application | Glass panels |
| Lifting capacity | Max 1200 kg – the lifting capacity depends on the configuration |
| Suction pads | No. 4 + 8 round suction pads - diameter 310 mm Lipped pads with safety ring |
| Pad spread | Pads are movable in different configurations 4 pads mm 942 x 722 12 pads mm 2175 x 1523 |
| Load movement | Powered 360-degree electric rotation Powered 90-degree hydraulic tilting system |
| Operating system | DC vacuum pump powered from on-board batteries High-capacity re-chargeable batteries Battery status indicator Economizer for reduction of the energy consumption |
| Vacuum system | 2 independent vacuum circuits, each vacuum circuit with vacuum reserve and non return valve |
| Weight of lifter | Kg 235 |
| Structural depth | mm 310 |
| Control | Tilting, rotation, suction and release are controlled by wireless radio remote control Release of the load by dual action security command |
| Standard features | Audible and visual low vacuum warning devices Vacuum gauge for each vacuum circuit; vacuum filter Battery charger 240 Volt Multi position hook connection |

Technical drawings



Vacuum glass lifter

GLE 4+8 d3 1200kg

 **Kg max 1200**

| Suction pads | | Capacity | Product code | Configurations | | | Suction pads spread |
|--------------|------|----------|--------------|----------------|----------------|------------|---------------------|
| No. | Ø mm | Kg | | Pads in use | Conf. capacity | Dimensions | mm |
| 12 | 310 | 1200 | GLE 4+8 d3 | 4 | 400 | X1 * Y1 | 945 x 725 |
| | | | | 6 | 600 | X2 * Y1 | 1690 x 725 |
| | | | | 8 | 800 | X2 * Y2 | 1690 x 1295 |
| | | | | 8 | 800 | X3 * Y3 | 2175 x 1525 |
| | | | | 10 | 1000 | X3 * Y3 | 2175 x 1525 |
| | | | | 12 | 1200 | X3 * Y3 | 2175 x 1525 |

Use examples in different configurations

